

# LTCart<sup>TM</sup>

## Internal Laptop Cart

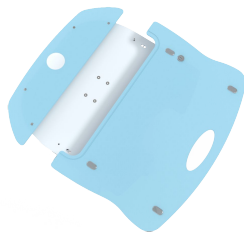


This innovative lightweight healthcare cart can quickly respond to caregiver's needs making sure the nurse can focus on what matter most, the patients.

Our LTCart providing an easy-to-maneuver height adjustable Healthcare cart that accepts most laptops in a variety of sizes. We have focused on an ergonomic design to best suit a healthcare environment. With our built in keyboard tray, attachments and accessories you will be sure to find the perfect fit.

### Features

- Easy cleaning
- Lightweight maneuverability
- Height Adjustable  
Or Fixed Height
- Compatible with our Geni-Tec<sup>TM</sup>
- Small footprint for space saving
- Tablet and monitor mounts available
- Infection control friendly



Power  
Delivery



24 hour  
Operations



Uninterrupted  
Workflow



Substance  
Protection



Total Mobility,  
free movement



Everything On  
One system



Mount limit	Max Weight	Adjustable	Tilt	Pan	Rotation	Vesa	Castors
Max 12kg	Max 18kg	815mm-1115mm	N/A	N/A	N/A	N/A	All Brakes

### Customization

For customisation options please contact the sales team on +44 (0) 1737 378 820



## Interlocking Security

Our LTCart features our new interlocking security laptop workstations which encloses and locks your laptop into the cart. The laptop is neatly hidden away only allowing the screen to be visible while providing a useable workspace .

## Keyboard Tray

Easy to use, easy to hide, keyboard tray and mouse pad combo. Our slim compacted design neatly hides the keyboard tray when not in use, as well as providing additional space for more attachments.



## Drawers & Keyboard Combo

Combine the space saving attachments to give you more room for more items. Our selections of drawers comes in both small (Image Example) & large configurations.

WOW-020D-0547-O (Non Powered)

## Standard Laptop Mount

If an enclosed laptop cart is not what you are looking for then there is always our standard laptop mount which secures your laptop externally from the cart. **Visit our website for more configurations.**

WOW-L11D-0547 (Non Powered)

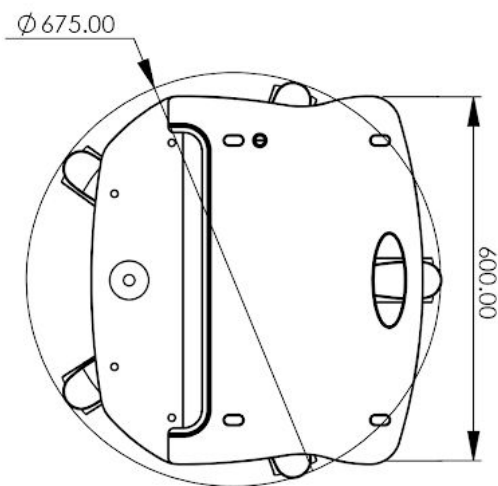
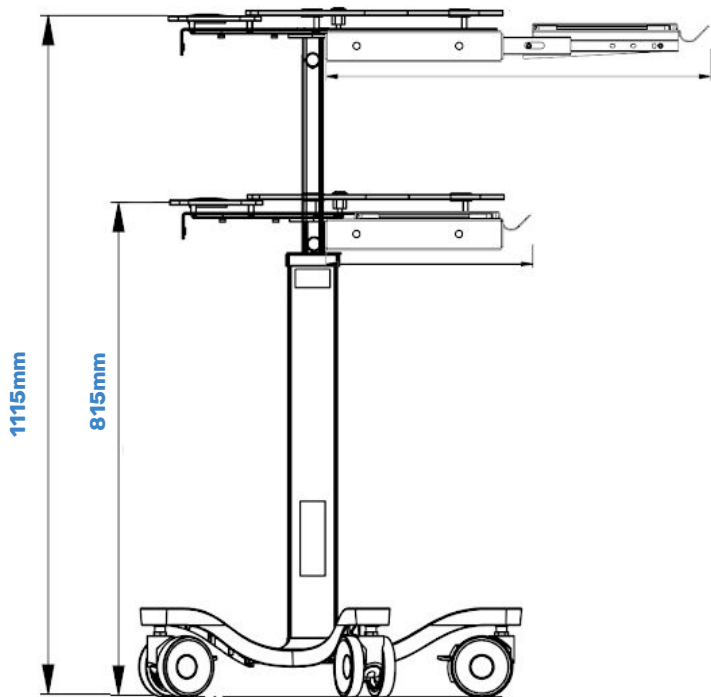


## Available Cart Shelving

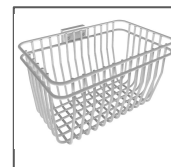
Attach multiple shelves to create more space for device placement and document placement. With an additional platform you can make better use of your carts space.

# LTCart<sup>TM</sup>

## Internal Laptop Cart



System Input Voltage	28 VDC (via optional GEN-PSU-220 Supplied Separately) <u>Only with GeniTec</u>
Max Tilt Angle	10 Degrees (in a static tilt test) As per EN-60601-1 section 9.4.2.1
Max Carrying Load	18 kg (subject to height)
Base	5 Wheel Star base - 675mm diameter 4 wheel base - 561mm x 557mm
Accessories Available	Handle, Basket, Medi-Rail, Cable Hook, Drip Pole, PSU Adapter Holder, Keyboard Tray
Castors (Standard)	5 Castors, 100mm, All braked 4 Castors, 100mm, All braked
Geni-Tec System	Dual Dock push button release, adjustable regulated output 12-28V (Battery Modules Supplied Separately,)
Compliance	CE, FCC Power System ; EN/ES/IEC 60601-1 Power Module: IEC 62133, UL 2054, UN38.3



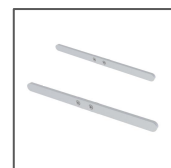
Basket



Handle



Hooks



Medical Rail



PSU Mount



Geni-Tec

**Ordering** Please find the part number configurator below. For More configuration please visit our website.

Family	Product Description	Part Number
LAP	Internal Laptop Cart, height adjustable (300mm), Extrusion length (710mm) - Non Powered - 5 star base 675mm 100 mm standard wheels	<b>WOW-020D-0547</b>
	Internal Laptop Cart, height adjustable (300mm) capability ,Extrusion length (710mm) - Single Dock - 5 star base 675mm 100 mm Pro wheels	<b>WOW-021D-1547</b>
	Internal Laptop Cart, height adjustable (300mm) capability ,Extrusion length (710mm) - Dual Dock - 5 star base 675mm 100 mm Pro wheels	<b>WOW-021D-2547</b>

### Customization

For customisation options please contact the sales team on +44 (0) 1737 378 820