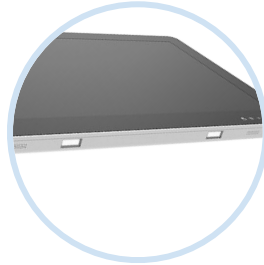


Marketing Datasheet

Multi Touch Display Panel PC

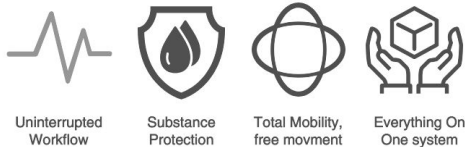


Our range of high performance professional models have been specifically designed with the healthcare professional in mind. Built with a large internal heat sinking for longer life, the Rheda range comes with extended multiport isolation board as an option for use with various healthcare applications.

Engineered with a fanless cooling system and a completely ventless design, Rheda 220P can delivery high quality images with dimmable backlight and a convenient reading light. Compatible with our GeniCart nursing carts, take advantage of our hot-swap power system to optimise your setup for 24/7 operational availability.

Features

- Intel Processors Celeron, i3-i5-i7 (6th Gen)
- 21.5" Full HD 1920 x 1080 display
- 10 point PCAP Multi-touch support
- Wide Viewing Angle
- Dual LED reading light bar
- Isolated USB x 2/ COM x 2/ LAN x 2 Ports
- Optional RFID/ NFC/Wifi/ BT module
- Fanless and Ventless Operation Design
- Anti-Microbial additive in housing
- Front panel IP65 sealed
- Slim design
- Touch to illuminate keypad



Uninterrupted Workflow

Substance Protection

Total Mobility, free movement

Everything On One system

Other option available, please see our website for further information or contact your local distributor.

If you are interested in our roll stands and carts, please enquiry for further details

Size	Weight	SDRAM	Display	Light-Bar	Isolation	Vesa	Fanless
21.5"	Max 18kg	8GB-16GB	1080p	Dual	RS-232/422/485	100mm/75mm	YES

Customization

For customisation options please contact the sales team on +44 (0) 1737 378 820

Specification

System

Processor Options	Celeron 3955U i3-6100U i5-6300U i7-6600U
System chipset	Integrated in Intel® Skylake ULT Processor
System memory	Default 8GB up to 16GB DDR4 2133 SDRAM
TPM	Infineon TPM 2.0
Graphics Controller	Intel® HD Graphics 520

Expansion

Expansion	1x Full size (Support half size, auto switch for mSATA, USB, PCIe signal 1x Full size mini PCIe Slot support PCIe and USB signal on IET module)
-----------	---

Storage

HDD/SSD	1x 2.5" SATA3 128GB SSD
---------	-------------------------

I/O

USB	4x USB3.0 4x USB 2.0 by pin header 2x USB 2.0 (isolated SKV).1x USB2.0 by Pin header on IET module
COM Port	1 x RS-232/422/485, 1 x RS-232 1 x RS-232 (Isolated 5KV), 1x RS-232/422/485 (Isolated 5KV) on IET module
HDMI	HDMI Video out on IET module
Reading light bar	LED Type

Audio

Audio Interface	Audio out and Mic
Speaker output	2x 0.5W

Ethernet

LAN port	1x Intel r i219LM Gigabit ethernet 1x intel 1211AT Gigabit ethernet 2x intel 1210AT Ethernet (Isolated %KV) on IET module
----------	---

Notice

Bytec Healthcare takes reasonable steps to ensure that all technical information and recommendations disclosed in our datasheets, brochures and website are based upon our experience and research, it is provided in good faith. Users shall independently determine the suitability of the products shown for their particular regional requirements and intended use, and will ensure that they meet the relevant regulations for the countries of use, as these may differ greatly from country to country. As such we accept no liability whatsoever for any inaccuracies herein disclosed. Please feel free to contact our technical teams, who would be delighted to advise you on specific regulatory issues. Bytec Healthcare reserves the right to alter, delete or make obsolete any product featured in its brochures, datasheet and website without prior notice. E&OE. © Copyright Bytec Healthcare Limited 2019 RHEDA is a trademark of Bytec Healthcare Ltd.

Specification

Mechanical & Environmental

Dimensions (WxHxD) Operating Temp Storage temp weight	539.6mm x 342.6mm x 45.2mm 0° - 40° C (32° ~ 104° F) -30° - 70° C (-22°F ~ 158° F) 6.3 kg
Construction Additives IP rating Vibration test Shock test Relative humidity	Plastic Anti-microbial and UV protection Front Panel IP65 Whole unit IPX1 With SSD/mSATA: 1.5G, IEC 60068-2-64, Random, 5~500Hz, 30min/axis With SSD/mSATA 1.5G, IEC 60068-2-27, half sine, 11ms 0%-90% relative humidity, non-condensing

Certification

Certification Information	EN60601-1, CE & FCC Class B CERTIFIED UL60601-1: AAMI /ANSI ES60601-1:2005/(R)2012 and A1:2012,C1:2009/(R)2012 and A2:2010/(R)2012 CB: IEC 60601-1/A1:2012 & EN 60601-1/A1:2013 (Ed 3.1) EN 60601-1:2006+A11:2011+A1:2013+A12:2014
---------------------------	---

Software support

OS information	WINDOWS 7,8,8.1,10,LINUX
----------------	--------------------------

Power requirements

Battery	1100mAh 4S1P (Optional)
Battery operating time adapter	Max 20 mins backup operation AC/DC medical power adaptor (delta MDS-090AAS24 B)

Notice

Bytec Healthcare takes reasonable steps to ensure that all technical information and recommendations disclosed in our datasheets, brochures and website are based upon our experience and research, it is provided in good faith. Users shall independently determine the suitability of the products shown for their particular regional requirements and intended use, and will ensure that they meet the relevant regulations for the countries of use, as these may differ greatly from country to country. As such we accept no liability whatsoever for any inaccuracies herein disclosed. Please feel free to contact our technical teams, who would be delighted to advise you on specific regulatory issues. Bytec Healthcare reserves the right to alter, delete or make obsolete any product featured in its brochures, datasheet and website without prior notice. E&OE. © Copyright Bytec Healthcare Limited 2019 RHEDA is a trademark of Bytec Healthcare Ltd.

Specification

Panel

LCD Size LCD Panel resolution	21.5" 21.5" Wide colour TFT LCD (16:9) 1920x 1080 Full HD
Pixel pitch Luminance Contrast ratio Viewing angle Touch Type Touch controller Durability AG protection Glass LCD MTBF Front touch OSD Keypad	274.5 x 274.5 250cd/m2 (typical) 3000:1 178° Projective Capacitive 10-points USB interface, EETI EXC3000 Over 50 Million Touches 100% Anti Glare Coating 30,000 hours 8 key - power on/off, brightness up/down, reading light on/off, volume up/down, touch on/off and backlight on/off

Data Collection

Camera NDC	2.0M CMDS (Optional) USB interface support ISO 14443-A (optional)
---------------	--

Wireless communication

WLAN Bluetooth	Mini PCIe interface IEEE 802.11 a/b/gm/ac draft 2.0 1T1R BT4.0+BLE (Optional)
-------------------	--

DC In/out Characteristics

Input Voltage Range Output range	100~240V ac, 1.5-0.75A, 50-60 Hz +24V dc, 3.75a MAX (90w)
-------------------------------------	--

Ordering

Please find the part number configurator below. For More configuration please visit our website.

Family	Product Description	Part Number
RHEDA	Intel® Core™ i7-6600U, Processor/8GB DDR4/128GB, SSD/PCAP, touch/Wifi/2xGLAN/ 4xUSB3.0/2xCOM/19V Adapter	BHD-215660-1110-C01
	Intel® Core™ i5-6300U, Processor/8GB DDR4/128GB, SSD/PCAP touch/Wifi/2xGLAN/, 4xUSB3.0/2xCOM/19V Adapter	BHD-215660-1110-C01

Customization

For customisation options please contact the sales team on +44 (0) 1737 378 820